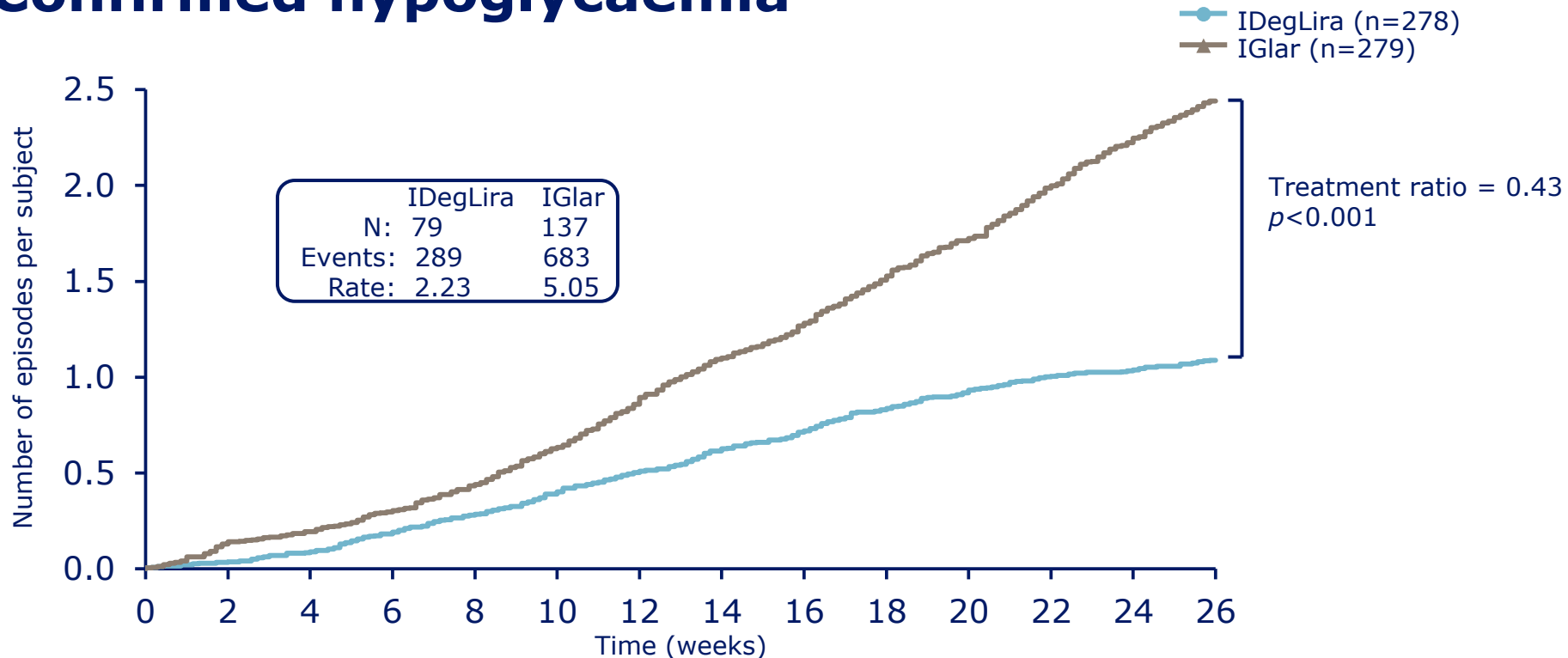


Confirmed hypoglycaemia



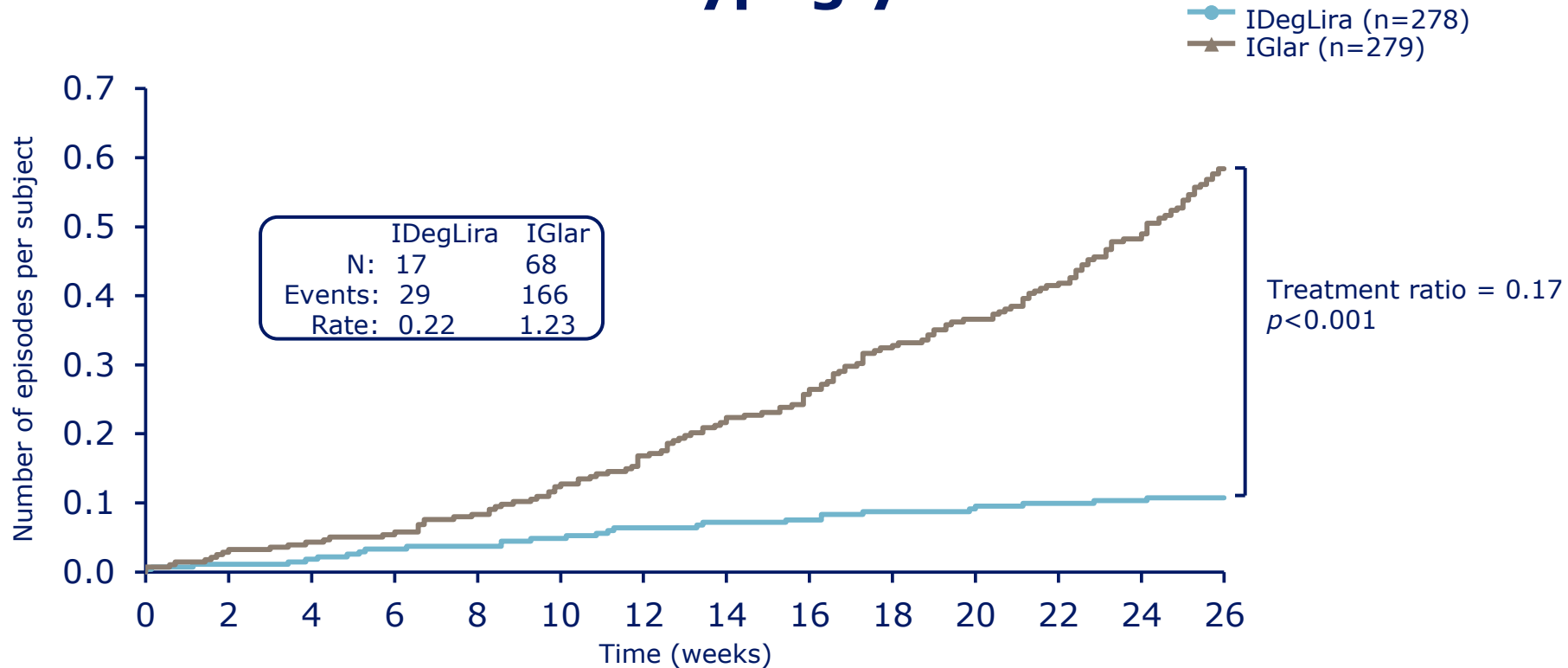
Mean cumulative function based on SAS

Treatment ratio (IDegLira/IGlar) is estimated from a negative binomial model based on FAS

Confirmed was defined as severe or < 3.1 mmol/L

N, number of subjects with at least one event; Rate, rate of events per subject-year of exposure

Nocturnal confirmed hypoglycaemia



Mean cumulative function based on SAS

Treatment ratio (IDegLira/IGlar) is estimated from a negative binomial model based on FAS

Confirmed was defined as severe or < 3.1 mmol/L. Nocturnal was defined as the between 00:01–05:59 (both inclusive)

N, number of subjects with at least one event; Rate, rate of events per subject-year of exposure

Buse JB et al., Diabetes, 2015; 64 (Suppl. 1):A43-44 (166-OR)